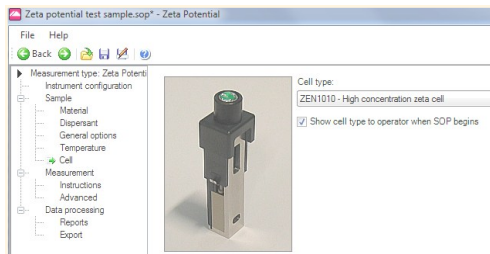


Malvern high concentration zeta cell



A new cell for the measurement of Zeta Potential that works with concentrations of up to 40% solids (sample dependant) and takes smaller volumes (down to 150 μ L). The cell is syringe filled and fully compatible with the Malvern titrator in a stop flow mode. The path length of the internal quartz cell is only 1.5mm compared to 4mm in the plastic folded path DTS1060 cells.

It is compatible with all Zetasizer Nano Z and ZS instruments and version 6.20 software. Simply select the ZET1010 cell in your SOP and all instrumental settings will be correct.

This is a beautifully engineered product with an innovative design that allows dismantling to clean the inner electrode and cell parts after your experiment.

ZEN1010 cell aqueous:

- ⇒ Where you cannot dilute your sample
- ⇒ When you need to study the effects of concentrations on your system
- ⇒ For really small volumes of sample
- ⇒ For titrations with not so dilute samples
- ⇒ To increase the signals from weak laser scatters like proteins.

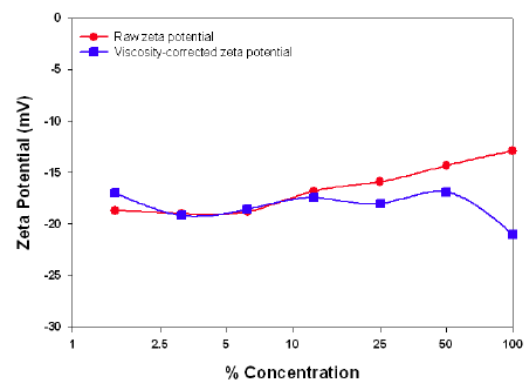


Figure 1: Raw and viscosity-corrected zeta potential values as a function of % concentration of skimmed milk

Particular Sciences Ltd

2 Birch House
Rosemount Business Park
Ballycoolin Road
Dublin 11, Ireland
Phone: (353) 01 8205395
E-mail: info@particular.ie

So, if you had a sample that previously was outside your zeta potential performance envelope, the measurement may work with the new ZET1010...ask Gerry Power for a demonstration or a trial and a quotation.